

Technique:	Sewing, Quilting
Designed By:	Linda Turner Griepentrog
Skill Level:	Intermediate
Crafting Time:	An evening
Finished size:	5" (12.70cm) wide (at top) x 6" (15.24cm)

## Featuring Dual Duty XP®, Coats® Machine Embroidery threads

Good things come in small packages and this tiny bag is ideal for holding the essentials a bride needs for her special day.

### Supplies

- Coats Dual Duty XP® All-purpose thread
- Coats® Machine Embroidery thread
- ¼ yd (22.86cm) white brocade fabric
- ¼ yd (22.86cm) lining fabric
- ¼ yd (22.86cm) fusible fleece
- 6/0 glass beads, pearl finish
- 5" (12.70cm) metal purse frame with clasp
- 30" (76.2cm) metal chain

### Additional Requirements

- Hand Sewing Needle
- Basic Sewing Supplies

## Cutting

### From the white brocade, cut:

Two 8" (20.32cm) squares

### From the lining, cut:

Two bag bodies using the pattern provided

**Note:** Compare your frame to the pattern provided, as shapes may differ. Use your shape as the upper portion of the bag.

### From the fleece, cut:

Two 8" (20.32cm) squares

## Preparation

1. Following the manufacturer's instructions, fuse the fleece squares to the wrong sides of the brocade squares.
2. Using machine embroidery thread, channel quilt every  $\frac{3}{8}$ " (.95cm) across both fused squares.
3. With the quilting lines vertical, cut a bag body from each square using the pattern provided, or your own custom pattern.

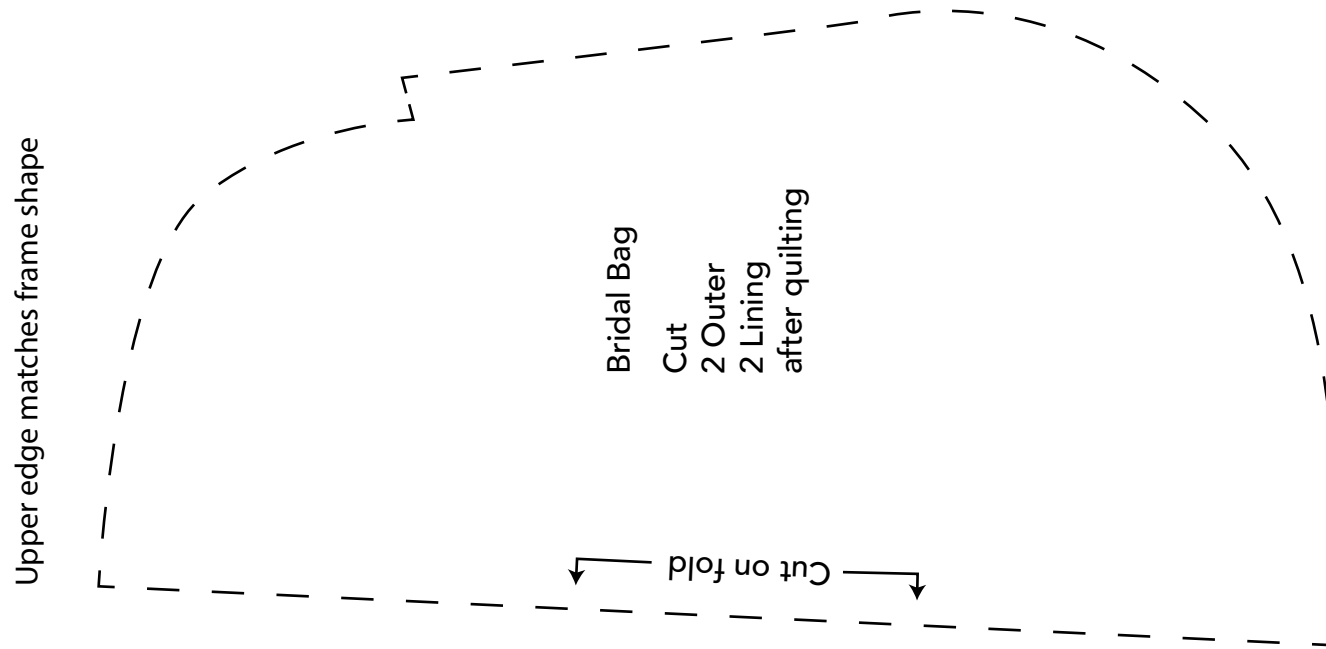
**Note:** Seam allowances are  $\frac{1}{4}$ " (.64cm).

## Assembling the Bag

4. With right sides together, sew around the lower curved portion of the bag front and back. Repeat for the lining front and back.
5. With wrong sides together, slip the lining into the bag. Matching the upper edges, zigzag the upper curves and hinge area edges together.

## Finishing the Bag

6. Slip the upper edge of one side of the bag into the purse frame channel. Hand-stitch through the holes in the frame to secure the bag portion to the frame. With each stitch, add a bead to the right side of the hole.
7. Repeat Step 6 for the purse back, opening the frame widely for access.



This square should  
measure 1" x 1"  
(2.54cm x 2.54cm)  
when printed.

\*\*\* Measure templates before cutting to confirm printing at 100%\*\*\*