



Cute Critters Water Bottle Holders

Technique:	Sewing
Designed By:	Linda Turner Griepentrog
Skill Level:	Experienced Beginner
Crafting Time:	Weekend
Finished size:	6" x 3" (15.24cm x 7.62cm) (excluding strap)

Featuring Dual Duty XP®

We all know the importance of staying hydrated, and with kids, it's equally important. Let them carry their own water in these cute character bags. Each one holds a .5 Liter bottle, perfect for sipping.

Supplies

- Dual Duty XP® All-purpose thread
- Fat Quarters (18" x 21" [45.72cm x 53.34cm]) or ¼ yd (22.86cm) of assorted prints lining
Shown: Kaffe Fassett Collective for FreeSpirit prints
- 1 each for upper section, lower section, and lining
- ¼ yd (22.86cm) fusible fleece
- 1 yd (.91m) webbing, 1" (2.54cm) wide
- 2 buttons for eyes
- 1 button for nose
- Hand-sewing needle

Embellishment options

- ¼ yd (22.86cm) grosgrain ribbon for hair, ⅝" (1.59cm) wide
- ¼ yd (22.86cm) double-fold bias tape for tail, ½" (1.27cm) wide
- Paper-back fusible web tape, ½" (1.27cm) wide, for tail

Cutting

From the upper fabric, cut:

(1) strip, 3" x 11½" (7.62cm x 29.21cm)

From the lower fabric, cut:

(1) strip, 4" x 11½" (10.16cm x 29.21cm)

(1) circle, 3½" (8.89cm) diameter

From the lining fabric, cut:

(1) rectangle, 6" x 11½" (15.24cm x 29.21cm)

(1) circle, 3½" (8.89cm) diameter

From the fleece, cut:

(1) rectangle, 6" x 11½" (15.24cm x 29.21cm)

(1) circle, 3½" (8.89cm) diameter

Optional embellishments

From the lining fabric, cut:

(4) ears

From grosgrain ribbon, cut:

(3) 3" (7.62cm) pieces

Note: Seam allowances are ¼" (.64cm).

Preparing the Tail *(optional)*

Insert a strip of fusible web tape between the layers of the double-fold bias tape and fuse. Tie a knot in one end of the bias and trim the end at an angle.

Assembling the Outer Holder

1. Sew together the long edges of the upper and lower sections. Press the seam toward the darker fabric.
2. Following the manufacturer's instructions, fuse the pieced rectangle and base circle to the fleece.
3. Channel quilt the lower section ¼" (.64cm) to ⅜" (.95cm) apart along the length of the rectangle.
4. Sew the center back seam in the rectangle, including the unknotted end of the tail if desired. Position the tail 1½" (3.81cm) from the lower edge. Press the seam open.
5. Pin-mark the halfway points on the base circle and the outer holder. Matching the marks, sew the base to the holder, easing the fabric around the curve of the circle.

Assembling the Lining

6. Sew the center back seam in the lining rectangle, leaving a 3" (7.62cm) opening for turning. Press the seam open.
7. Pin-mark the halfway points on the base circle and the lining. Matching the marks, sew the base to the lining, easing the fabric around the curve of the circle.

Optional Embellishments

Hair:

Fold each 3" (7.62cm) length of ribbon in half to form a loop. Baste the cut edges together ⅛" (.32cm) from the edge. Place the loops next to each other and stitch together to form a strip. Matching the cut edges, baste the strip to the center front upper edge.

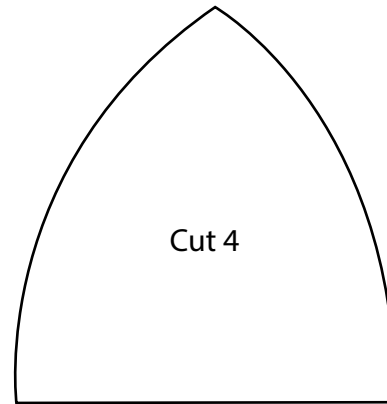
Ears:

With right sides together, sew two ears, leaving the lower edge open. Trim the seam and clip the corner. Turn right side out and press. Matching the cut edges, baste one ear to each side of the holder center front.

Finishing the Holder

8. Fold the holder matching the center front and center back, and mark the side point. Center the webbing ends over the side markings, being careful not to twist. Try on and adjust the length if needed. Baste in place.
9. With right sides together, slip the lining over the holder, with the webbing tucked between, and matching the center backs. Sew around the top of the holder.
10. Turn the holder right side out through the lining opening. Stitch the opening closed.
11. Tuck the lining into the tote and press the upper edge firmly. Be careful pressing near the webbing to avoid melting. Topstitch the upper edge ¼" (.64cm) from the fold.
12. Sew on the button eyes and nose at the center front.

Cute Critters Water Bottle Holders



*** Measure templates before cutting to confirm printing at 100%***