



# Holiday Baby Bib

Technique:	Sewing, Decorative stitching
Designed By:	Linda Turner Griepentrog
Skill Level:	Beginner
Crafting Time:	An evening
Finished size:	12 ½" x 9 ½" (31.75cm x 24.13cm) (flat)

## Featuring Coats Dual Duty XP®

Use those decorative machine stitches to embellish a holiday tree appliqué for this cute bib front.

## Supplies

- Coats Dual Duty XP® All-purpose thread
- ½ yd (45.72cm) red polka dot fabric
- ½ yd (45.72cm) green print fabric (lining)
- ½ yd (45.72cm) lightweight fusible interfacing
- 6" (15.24cm) square white poplin or denim
- 1" (2.54cm) hook-and-loop tape
- Paper-back fusible web
- Removable marker

## Pattern tracing paper

*Note: ½ yard of fabric will make multiple bib pieces, so make some for friends.*

## Preparation

Trace tree pattern onto pattern tracing paper and cut out. Join the upper and lower bib sections and trace the pattern onto pattern tracing cloth.

## Cutting

**From the red polka dot and green print fabrics, cut:**  
(1) bib

**From the fusible interfacing, cut:**  
(1) bib

## Embellishing the Bib Front

1. Following the manufacturer's instructions, fuse the interfacing to the bib front wrong side.
2. Trace the tree shape onto the white fabric square using the removable marker.
3. Set the machine for a zigzag stretch stitch (shown) or other decorative stitch. Thread the machine with brown thread and sew across the trunk area, extending the stitching just beyond the drawn lines. Change to green thread and sew across the tree area, extending the stitching beyond the drawn lines.
4. Straight stitch along the tree outline.
5. Following the manufacturer's instructions, fuse the web to the wrong side of the embellished tree fabric. Trim the fabric close to the tree outline stitching.
6. Mark the bib front center at the top and bottom. Center the tree about 1¼" (3.18cm) from the lower edge and fuse in place.
7. Satin stitch around the tree edges.

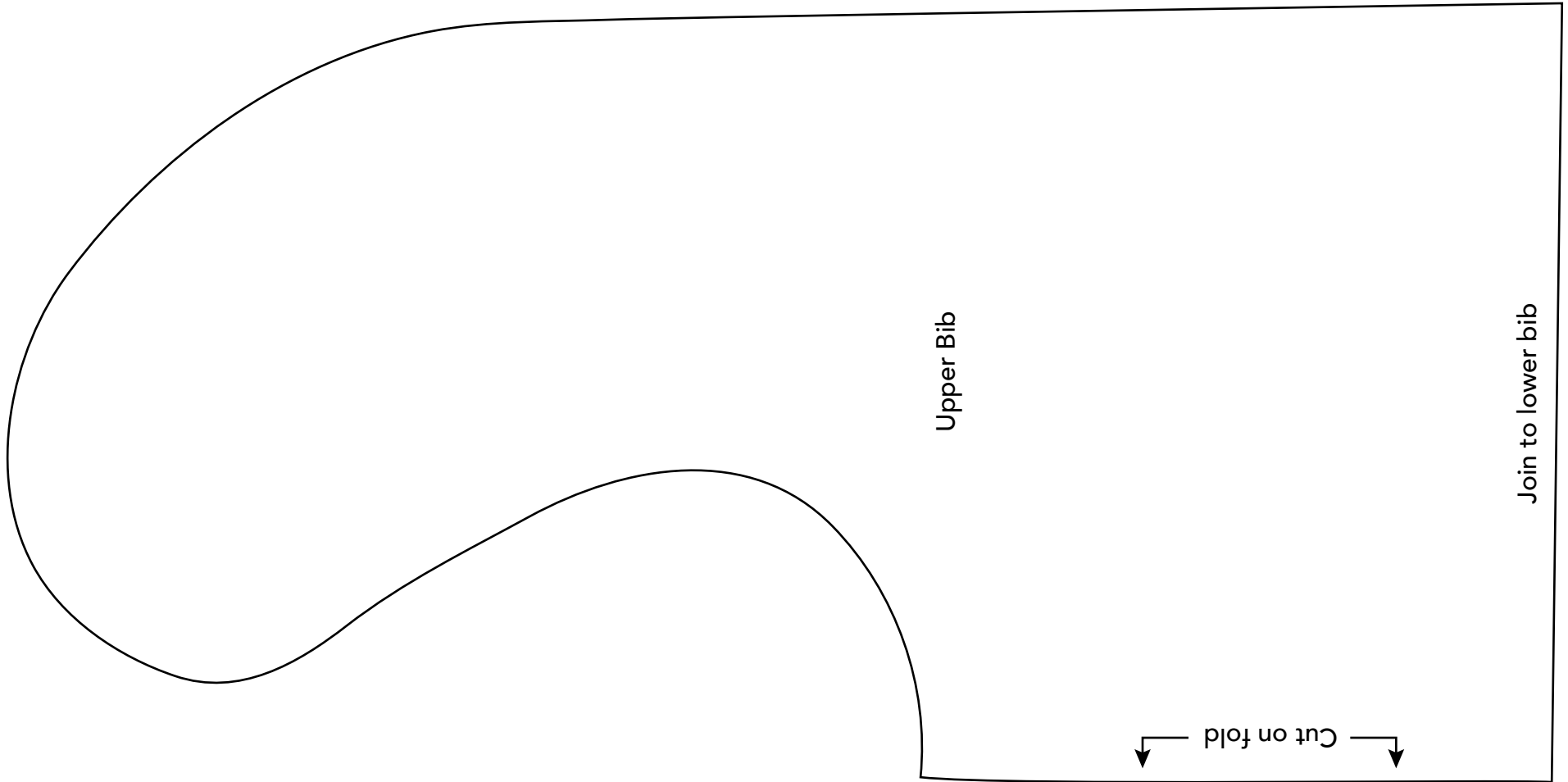
*Seam allowances are ¼" (.64cm).*

## Assembling the Bib

1. Place the bib front and lining right sides together matching the raw edges. Pin.
2. Sew around the bib perimeter, leaving a 3" (7.62cm) opening along one side for turning.
3. Clip the curves and trim the seam allowances to ⅛" (.32cm). Turn the bib right side out and press the edges.
4. Hand-stitch the opening closed.

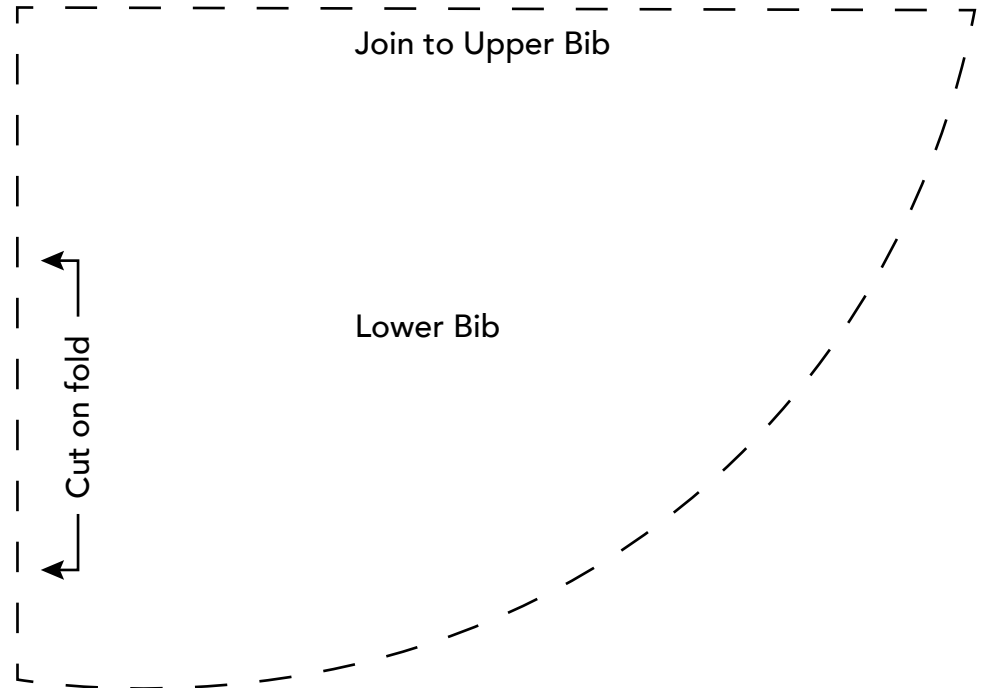
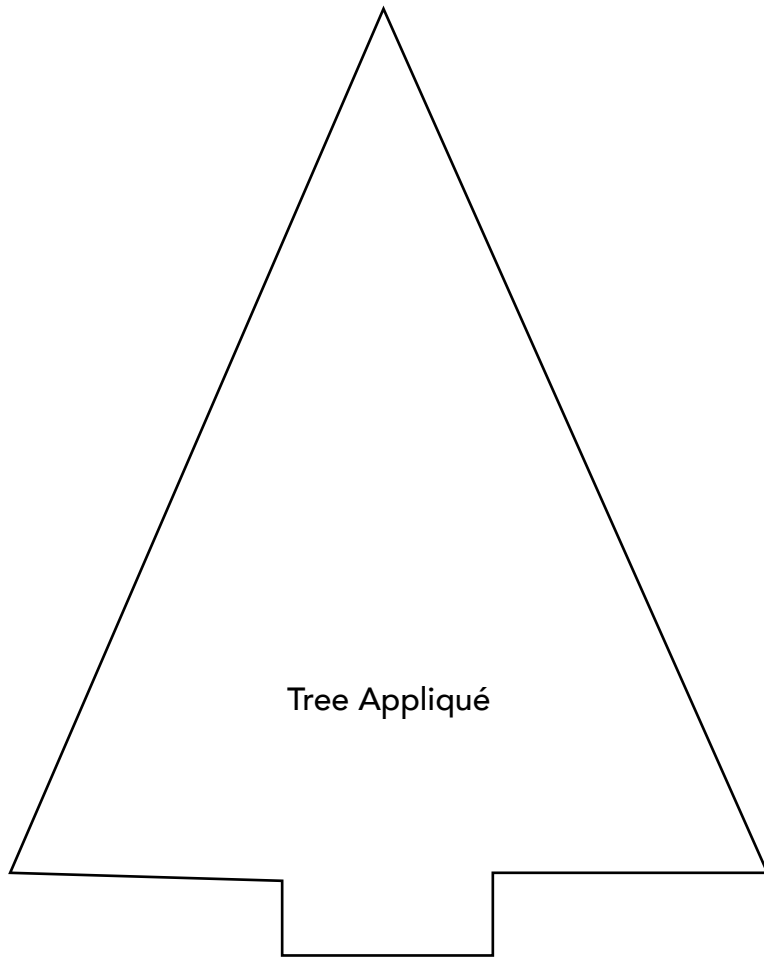
## Finishing the Bib

1. Sew the hook portion of the hook-and-loop tape to the underlap of the back neck edge, and sew the hook portion to the matching overlap area.



This square should  
measure 1" x 1"  
(2.54cm x 2.54cm)  
when printed.

\*\*\* Measure templates before cutting to confirm printing at 100%\*\*\*



This square should measure 1" x 1" (2.54cm x 2.54cm) when printed.

\*\*\* Measure templates before cutting to confirm printing at 100%\*\*\*