



Technique:	Sewing, Fabric Crafting
Designed By:	Linda Turner Griepentrog
Skill Level:	Experienced beginner
Crafting Time:	Weekend
Finished size:	16" (40.64cm) square

Featuring Dual Duty XP[®], Coats[®] Metallic Thread

Add holiday cheer to any place in the room with this beautiful wreath pillow. Coats Metallic thread gives it extra sparkle.

Supplies

- Coats Dual Duty XP[®] All-purpose thread
- Coats Metallic embroidery thread, Gold
- ½ yd (45.72cm) white-on-white print fabric
- ¾ yd (34.29cm) red/white polka dot fabric
- ½ yd (45.72cm) green felt
- 3 rectangles assorted green felt, 9" x 12" (22.86cm x 30.48cm) (These should be a different color from the ½-yard (45.72cm) cut.)
- 2 yd (1.83m) pre-made red piping
- 16" (40.64cm) pillow form
- 25 red pom-poms, ½" (1.27cm)
- Fabric glue
- Pattern tracing paper
- Zipper foot

Preparation

Trace the wreath and holly leaf patterns onto pattern tracing paper and cut out. Cut out the wreath center circle as well.

Cutting

WOF = Width of Fabric

From the white-on-white fabric, cut:

- (1) square, 16½" (41.91cm)
- (2) rectangles, 11" x 16½" (27.94cm x 41.91cm)

From the red/white polka dot fabric, cut:

- (1) strip, 6½" x WOF (16.51cm x WOF)

From the ½-yard (45.72cm) cut of green felt, cut:

- (1) wreath, using the pattern provided

From the assorted green felts, including the wreath scraps, cut:

- (40-50) holly leaves

Preparing the Leaves

1. Thread the machine with metallic thread through the needle and green thread in the bobbin.
2. On each leaf, sew a vein pattern. The leaves don't all have to be the same—some can have single veins, others can have multiples. To avoid having to tie the threads, follow the diagram to stitch in a continuous line, beginning and ending at the leaf stem which will be hidden under the berries.
3. Depending on the weight of your felt and the machine tension, the leaves may tend to curl or crinkle with the vein stitching—this is a good thing as it adds dimension and interest to the finished holly wreath. If you prefer a flatter look, adjust the machine tension accordingly.

Seam allowances are ¼" (.64cm).

Assembling the Pillow Front

1. Center the felt wreath on the 16½" (41.91cm) white-on-white print square and pin in place.
2. Using a medium width and medium length zigzag, sew around the inner and outer circle edges to hold it in place.
3. Working with groups of leaves, pin them in place around the wreath with the metallic stitching side up, leaving the upper center area free for the bow. Leaves don't have to cover the entire wreath circle. Position the various greens randomly for a pleasing effect.
4. Sew a small line of straight stitching with green thread at the leaf grouping stems, just enough to hold them in place. Repeat for all the leaves.
5. Baste the piping in place around the pillow form edges using a zipper foot to stitch close to the cord. Clip the piping flange at the corners for turning.



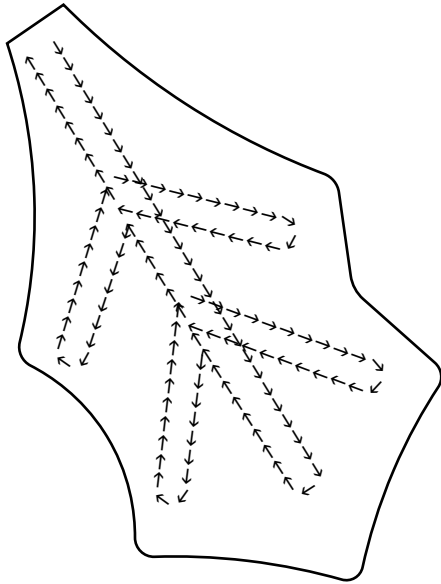
Assembling the Pillow

1. Narrowly double hem the long edges of both 11" x 16½" (27.94cm x 41.91cm) white-on-white rectangles.
2. Overlap the hemmed edges to form a 16½" (41.91cm) square. Baste the overlap edges together to form the pillow back.
3. With right sides together, pin the pillow back to the pillow front, matching the cut edges.
4. Stitch around the pillow perimeter, just inside the stitching line to snug up to the piping.
5. Trim the corner seam allowances to reduce bulk and turn the pillow right side out.

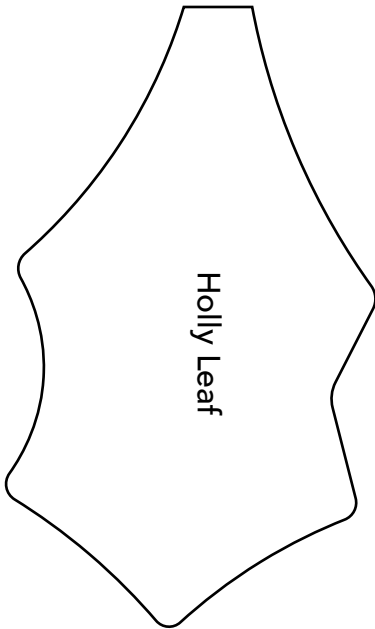
Embellishing the Pillow Front

1. Position the red pom-poms in groups around the leaf stems. Not all the stems have pom-poms, so place as desired.
2. Glue the pom-poms in place and let dry.
3. To make the bow, fold the red/white polka dot strip in half and sew the long edges together, leaving a 3" (7.62cm) hole for turning. Hand-stitch the opening closed.
4. Tie the fabric into a bow, and securely hand-stitch to the top of the wreath, shaping the bow as needed.

Continuous Stitching Path



Holly Leaf



Cut on fold

Wreath

Cut on fold

This square should measure 1" x 1" (2.54cm x 2.54cm) when printed.

*** Measure templates before cutting to confirm printing at 100%***