

Gym Bag With Name

Skill level: Beginner/Intermediate

Featuring: Dual Duty XP thread



Technique:	Sewing
Designed By:	Eva Herr
Brand:	Dual Duty XP
Crafting time:	Evening

Create a drawstring bag for carrying gym class essentials.

Finished Size of Project: 16" x 16" (40.64cm x 40.64cm)

Supplies:

Coats Dual Duty XP all-purpose thread, white and contrasting color yd.

Outer bag:

FreeSpirit coordinating print fabrics, 2 pieces, each 4 $\frac{3}{4}$ " x 28" (12 x 70 cm), and 1 piece, 8 $\frac{3}{4}$ " x 28" inches (22 x 70 cm)

Lining:

FreeSpirit Designer Essential solid fabric, 2 pieces, 8 $\frac{3}{4}$ " x 28" (35 x 46 cm)

Additional Requirements:

Fabric scissors

Measuring tape

Hand sewing needle

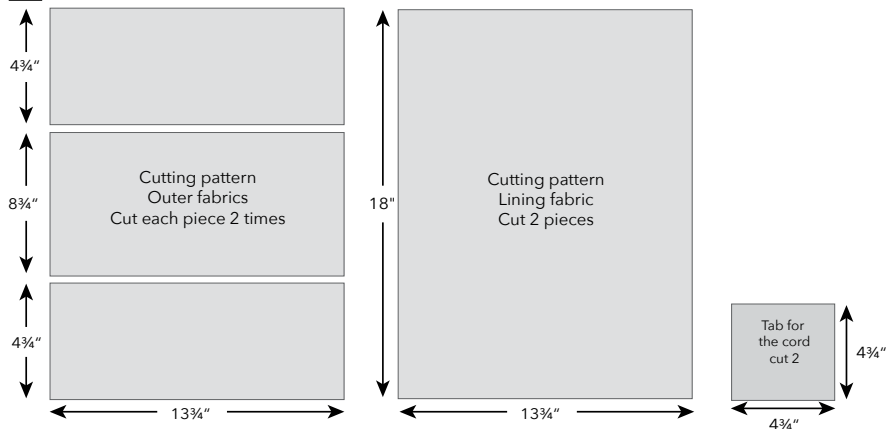
Felt-tip marker

White cord, 2 pieces, 60" (150cm) Long, $\frac{1}{8}$ " (3mm) Thick

Sewing machine

Gym Bag With Name

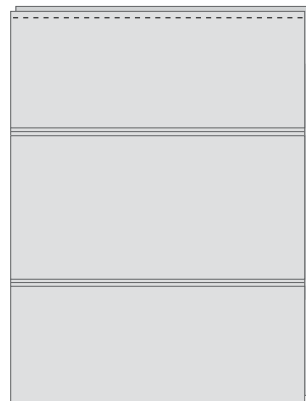
1 Cutting fabric pieces - all the measurements in cm



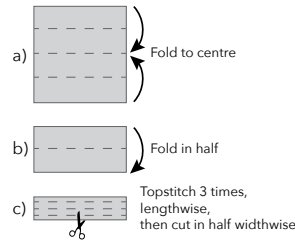
2 Stitch pieces of outer fabric together



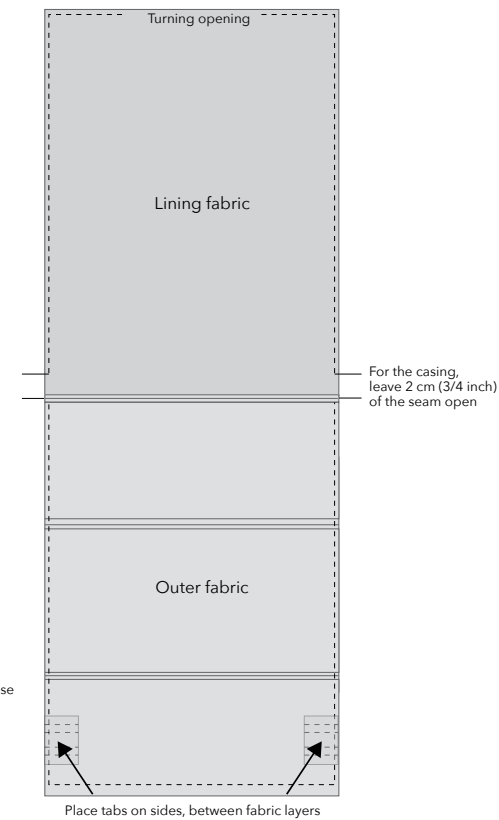
3 Stitch each pieced outer fabric unit to a lining piece along one narrow edge, right sides facing.



4 Make the cord tabs



5 Lay the 2 pieced rectangles together, right sides facing



On the centre fabric section of one outer pieced unit, write the child's name, with a fabric marker.



Stitch along the marked lines with wide, closely spaced zigzag stitching. Press stitching flat.

Gym Bag With Name



For each side of the bag, stitch 3 outer fabric pieces together then stitch the lining piece to the outer unit (**page 2, images 2 + 3**).



Press all seams.



Make the tabs (**images 4**).



Work as shown in (**images 5**) to stitch the two long rectangles together, catching the tabs as illustrated.



Press seams.



Turn the lining to the inside, sliding each lining corner into the bag corner. Press seams again. The lining is longer so a strip of the lining fabric will be visible on the upper edge of the bag.



Topstitch 2 cm ($\frac{3}{4}$ inch) from the top of the bag (along the lining fabric), to form the casing.



Using a safety pin as a bodkin and beginning on one side of the bag, pull one cord through the casing on the front side of the bag and back through the casing on the back side of the bag. Run both cord ends through the tab and knot them together below the tab. Run the second cord through the casings in the same manner but begin on the opposite side of the bag.