



Holiday Hot Mitt

Technique:	Decorative Stitching, Sewing
Designed By:	Linda Turner Griepentrog
Skill Level:	Experienced Beginner
Crafting Time:	Weekend
Finished size:	8½" x 11" (21.59cm x 27.94cm) (excluding handle loop)

Featuring Coats® Cotton All Purpose and Machine Quilting Threads

There will be a wave of holiday cheer whenever someone reaches for something from the oven with this fun stitched mitt. Or, make several and hang them on a garland. Tuck in a fun kitchen tool and it can act as a novelty stocking.

Supplies

- Coats® Cotton Machine Quilting Thread Thread*
- Coats® Cotton All Purpose Thread*
- ½ yd (30.48cm) white canvas fabric
- ½ yd (45.72cm) red polka dot fabric (binding, backing and pocket lining)
- ½ yd (30.48cm) insulated fleece, like Insul-Bright
- ½ yd (30.48cm) cotton batting
- Size 1½ needle
- Removable marker

*It's important to use cotton threads on hot mitts, as synthetics may melt when in contact with a high heat source. These are 30-weight threads that make prominent decorative stitching.

Cutting

From white canvas, cut:

- (1) rectangle, 9" x 10" (22.86cm x 25.40cm), for pocket
- (1) rectangle, 10" x 13" (25.40cm x 33.02cm), for mitt

From red polka dot, cut:

- (1) rectangle, 9" x 10" (22.86cm x 25.40cm), for pocket
- (1) rectangle, 10" x 13" (25.40cm x 33.02cm), for mitt
- Enough 2½" (6.35cm) bias strips to make 56" (142.24cm) finished binding.

From cotton batting, cut:

- (1) rectangle, 9" x 10" (22.86cm x 25.40cm), for pocket
- (2) rectangles, 10" x 13" (25.40cm x 33.02cm), for mitt

From insulated fleece, cut:

- (1) rectangle, 10" x 13" (25.40cm x 33.02cm), for mitt

Assemble the Pocket

1. Draw the pocket shape onto the right side of the 9" x 10" (22.86cm x 25.40cm) white canvas rectangle using a removable marker. Draw several lines parallel to the pocket upper edge to use as stitching guidelines.
2. Layer the pocket lining rectangle face down, topped by the 9" x 10" (22.86cm x 25.40cm) cotton batting rectangle, and the marked white canvas rectangle right side up. Pin the layers together.
3. Select decorative stitches in your machine and sew them across the pocket front, spacing and changing colors as desired. Sew beyond the side pocket markings.
4. Trim only the pocket upper edge and bind it.

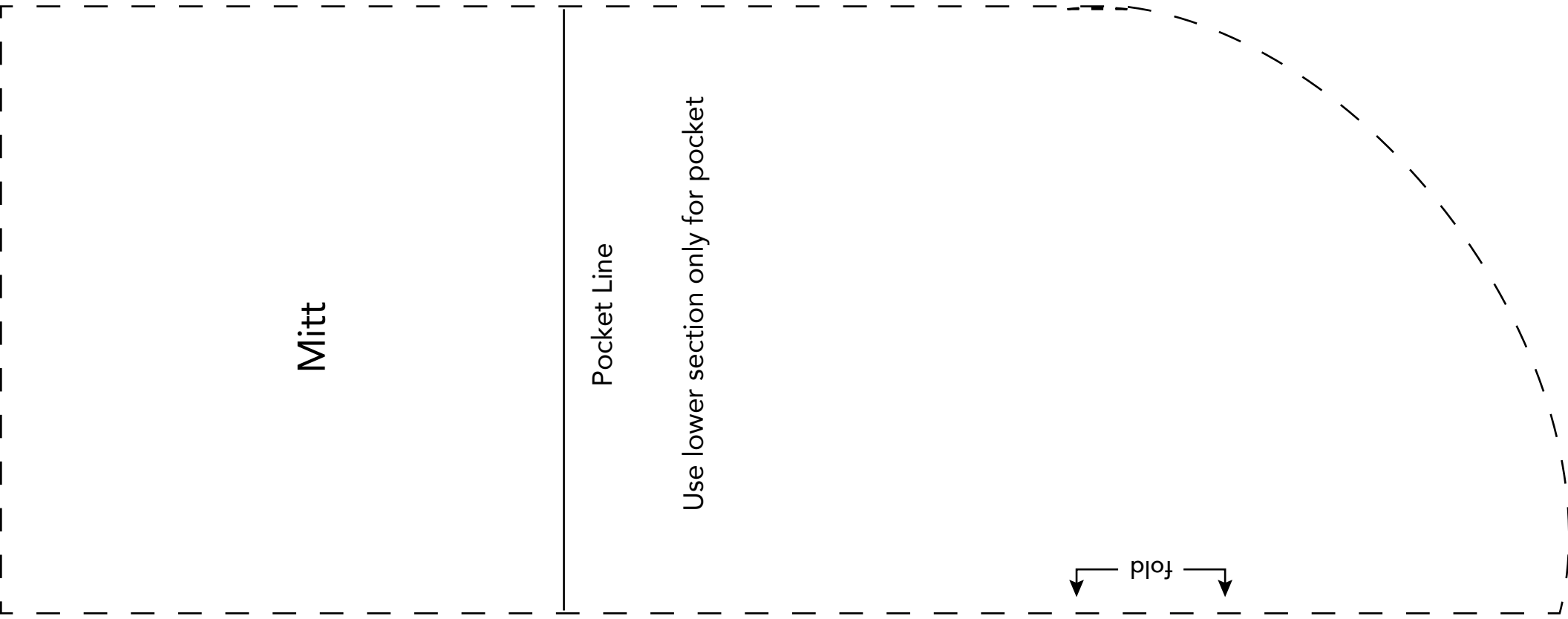
Assemble the Mitt

1. Draw the shape of the mitt onto the right side of the 10" x 13" (25.40cm x 33.02cm) white canvas rectangle using a removable marker. Mark a line across at the pocket line. Draw several lines above the pocket line parallel to the upper edge to use as stitching guidelines.
2. Layer a 10" x 13" (25.40cm x 33.02cm) cotton batting rectangle and the marked white canvas rectangle right side up. Pin the layers together.
3. Select decorative stitches in your machine and sew them across the mitt above the pocket marking only, extending the stitching slightly beyond the side edge markings.
4. Layer the stitched mitt rectangle over a rectangle of insulated fleece (with the metallic side down), another rectangle of cotton batting and the polka dot fabric face down. Pin the layers together. Top with the embellished pocket rectangle, matching the outer lines. Stitch around the mitt on the marked outline through all layers. Trim the mitt perimeter on the marked lines.

Note: *This is very thick, so trim a few layers at a time if needed.*

Finishing

1. Sew the binding strips together end to end using diagonal seams. Press the binding in half wrong sides together.
2. Starting at the upper left corner, bind the mitt edges, mitering the corner and easing the bias binding around the curves. At the starting point, extend the binding 8" (20.32cm) and trim off any excess length.
3. Turn the binding to the underside of the mitt and hand-stitch the bias folded edge to the polka dot fabric layer. At the extension, fold in the raw edges ¼" (.64cm) and hand-stitch the bias folded edges together. Fold the finished extension in half to form a loop, turn under the raw end edges and hand-stitch in place to secure the loop.



This square should
measure 1" x 1"
(2.54cm x 2.54cm)
when printed.

*** Measure templates before cutting to confirm printing at 100%***