



# Cushy Soft & Snuggly Slippers

Technique:	Sewing
Designed By:	Lori Harder
Skill Level:	Intermediate
Crafting Time:	Weekend
Finished size:	Fits size 8-8½ women's shoe size

## Featuring Coats Dual Duty XP® Thread

You'll love snuggling up by the fire in these extra-cushy fuzzy slippers with a roll-down cuff.

## Supplies

- **Coats XP® All-purpose Thread**
- ½ yard (45.72cm) Cuddle® 3, Taupe (*outer*)
- ½ yard (45.72cm) Luxe Cuddle® Heather, Quartz (*lining*)
- ¼ yard (22.86cm) single-sided fusible foam interfacing, 58" (147.32cm)
- ⅝ yard (57.15cm) extra-firm sew-in interfacing, 20" (50.80cm)
- ⅜ yard (34.29cm) ultra-firm fusible interfacing, 20" (50.80cm)
- 1 package non-slip sole fabric (at least 11" x 24" [27.94cm x 60.96cm])
- Spring clips
- Removable marker

*Featured fabrics are from Shannon Fabrics.*

## Cuddle Sewing Tips

1. Use pattern weights or clips to hold pattern pieces in place for cutting if pins don't work well.
2. Put all cut pieces in the dryer for 10 minutes to get rid of any loose fibers.
3. Finger-press all seams; do not iron.

## Cutting

*Fold fabric in half, matching selvages; cut each pattern piece once to create a left and right slipper. If cutting single layer, remember you need a right and left, so flip the pattern piece face down for the second piece.*

### From outer fabric, cut:

2 Toe  
2 Slipper Top

### From lining fabric, cut:

2 Toe  
2 Slipper Top  
2 Sole

### From extra-firm interfacing, cut:

2 Toe  
2 Slipper Top

### From ultra-firm interfacing, cut:

2 Sole

### From fusible foam interfacing, cut:

2 each of left and right Sole

### From non-slip sole fabric, cut:

2 Sole

Use a removable marking pen to transfer markings to wrong side of fabric. Transfer cuff fold line to the right side of the fabric.

*All seam allowances are 1/2" (1.27cm).*

## Assemble Upper Slipper

1. Hand-baste the extra-firm interfacing to the wrong side of outer slipper tops and outer toe pieces along the seamline. Trim interfacing to the seam allowances.
2. Clip almost to the seam allowance of slipper top large curve at 3/4" (1.91cm) intervals. Right sides together and matching center points, sew the upper toe edge to the large curve on the slipper top. Trim seams on outer fabric only to 1/4" (.64cm). Finger-press seams open. Repeat for the second slipper and both linings.
3. Sew the center back seam of each slipper top and slipper top lining. Trim seams to 1/4" (.64cm).
4. Right sides together, pin the lining and outer slipper tops together, matching points at the cuff curve. Pin and sew along top edges, pivoting at the inner corner. Trim seam to 1/4" (.64cm). Clip around curves every 1/4" (.64cm) and clip to the seam allowance at the inner curve corner. Turn right side out and topstitch along the marked cuff fold line through all layers.
5. Matching the lower edges, hand-baste the lower slipper top and toe edges together starting at the center of the toe. Leave the thread tails loose to help ease the toe onto the sole.

## Assemble Soles

1. Layer the sole pieces (remember to make a right and left) from top to bottom: fusible foam (adhesive side down), ultra-firm interfacing (adhesive side up) and fusible foam (adhesive side up). Following the manufacturer's instructions, fuse the layers together, fusing from both sides for a secure bond.
2. Wrong sides together, hand-baste the lining fabric to the upper foam layer and the non-slip fabric to the remaining foam side in the seam allowances. Double check that you have a left and right sole.

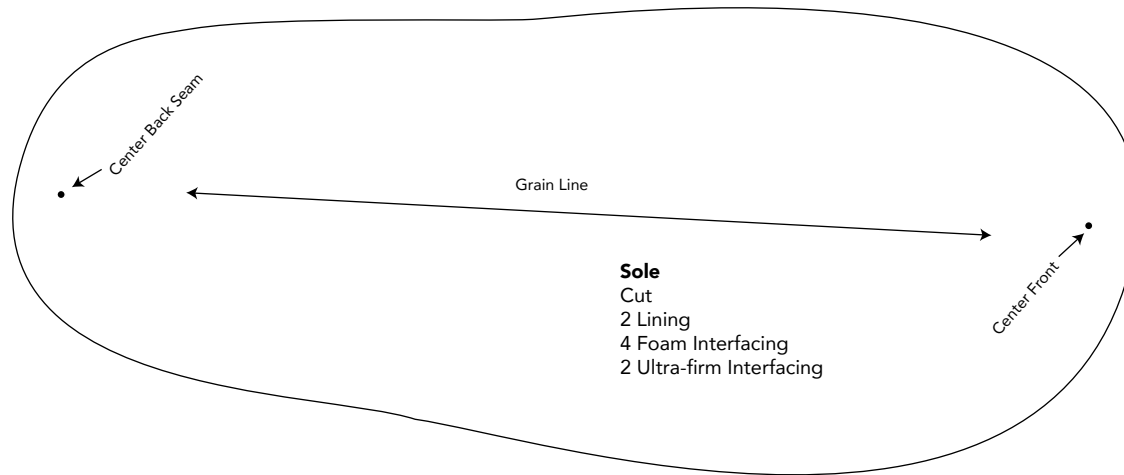
## Assemble Slippers

1. With right sides together and matching centers, secure the upper slipper to the sole using clips. Note that the cuff curve in the slipper top is to the outside edge of each sole so you have a left and right slipper. Clip the heel area of the slipper top as needed to go around the sole curve, and pull the basting threads to ease the toe curve to the sole.
2. Stitch the outer slipper seam and trim the seam allowances to 1/4" (.64cm). Finish the seam allowances together with a zigzag or serger stitch, if desired. Turn the slippers right side out and fold down the cuff along the topstitched line.

# Cushy Soft & Snuggly Slippers

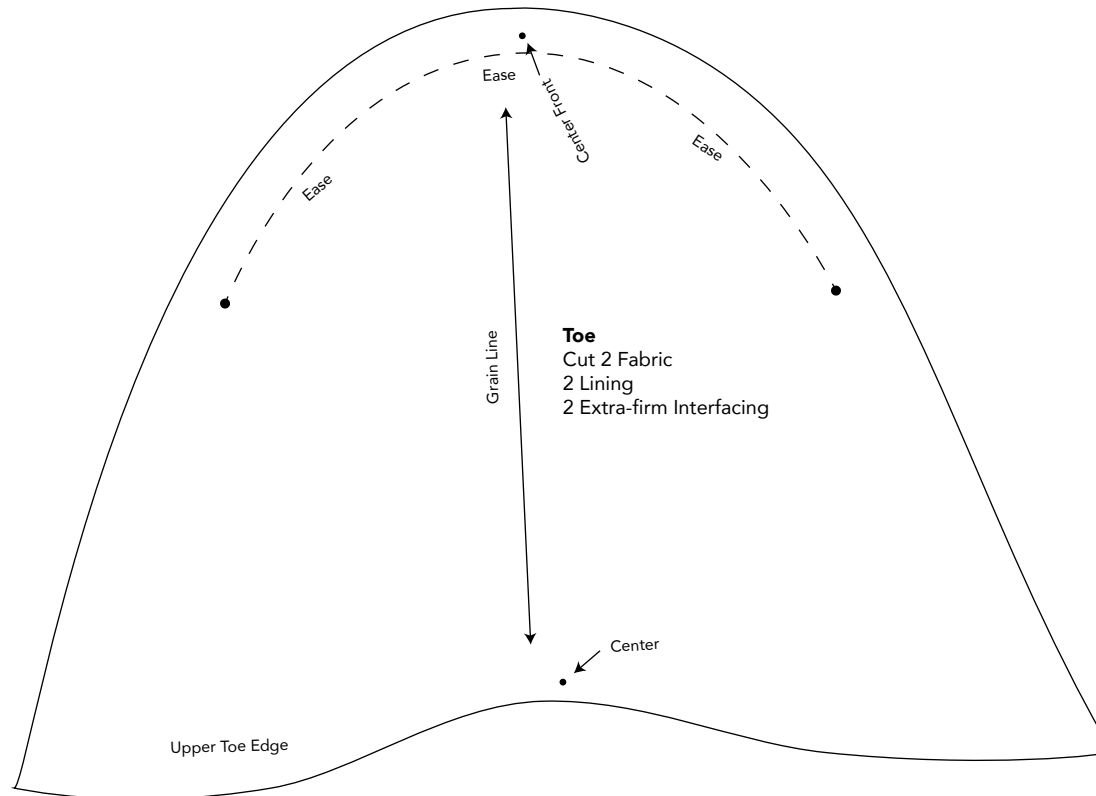
\*\*\* Measure templates before cutting to confirm printing at 200%\*\*\*

This square should  
measure 1" x 1"  
(2.54cm x 2.54cm)  
when printed.



\*\*\* Measure templates before cutting to confirm printing at 200%\*\*\*

This square should measure 1" x 1" (2.54cm x 2.54cm) when printed.



\*\*\* Measure templates before cutting to confirm printing at 200%\*\*\*

This square should  
measure 1" x 1"  
(2.54cm x 2.54cm)  
when printed.

