



Technique:	Sewing, Invisible zipper insertion
Designed By:	Linda Turner Griepentrog
Skill Level:	Experienced Beginner
Crafting Time:	18" x 10" (45.72cm x 25.40cm)

Featuring Coats® Invisible Zipper

Whether you use it for travel to keep valuables safely stowed, or you use it at home to keep the right accessories with an outfit, the handy hanger safe is unobtrusive. Built on a padded hanger, it resides inside your garment tucked into the closet.

Supplies

- **20"-22" (50.80cm-55.88cm) Coats® Invisible Zipper**
- **Coats Invisible Zipper Foot**
- **Coats Dual Duty XP® All-purpose Thread**
- ¾ yd (68.58cm) fabric
- ½ yd (45.72cm) fusible tricot interfacing, 20" (50.80cm) wide
- ½ yd (45.72cm) ribbon, 5/8" (1.59) wide
- 1 canvas or satin padded hanger, about 16" (40.64cm) across
- Zipper foot
- Pattern tracing cloth

Preparation

1. Trace the pattern piece onto pattern tracing cloth and cut out.
2. If your hanger has a bow on it, remove the bow.

Cutting

From the outer fabric, cut:

- 1 upper safe, transfer the dot markings
 - 1 lower safe rectangle, 7 $\frac{3}{4}$ " x 19" (19.69cm x 48.26cm)
- Save remaining fabric for cutting the back.

From tricot interfacing, cut:

- 1 upper safe
- 1 lower safe rectangle, 7 $\frac{3}{4}$ " x 19" (19.69cm x 48.26cm)

Seam allowances are $\frac{1}{4}$ " (.64cm) except at zipper edges, where they're $\frac{1}{2}$ " (1.27cm)

Assemble the Front

1. Fuse the interfacing to the wrong side of the upper safe and lower rectangle pieces.
2. Following the manufacturer's instructions, insert the invisible zipper onto the lower upper safe edge and one long edge of the rectangle, placing the pull $\frac{1}{2}$ " (1.27cm) in from one edge. Note that the zipper will be longer the opening.
3. To shorten the zipper, close the zipper and stitch across the extending end several times to secure within the seam allowance. Cut off the extra length. If the upper and lower vertical safe edges don't align, trim to match.
4. Sew the opening end of the zipper together within the seam allowance.

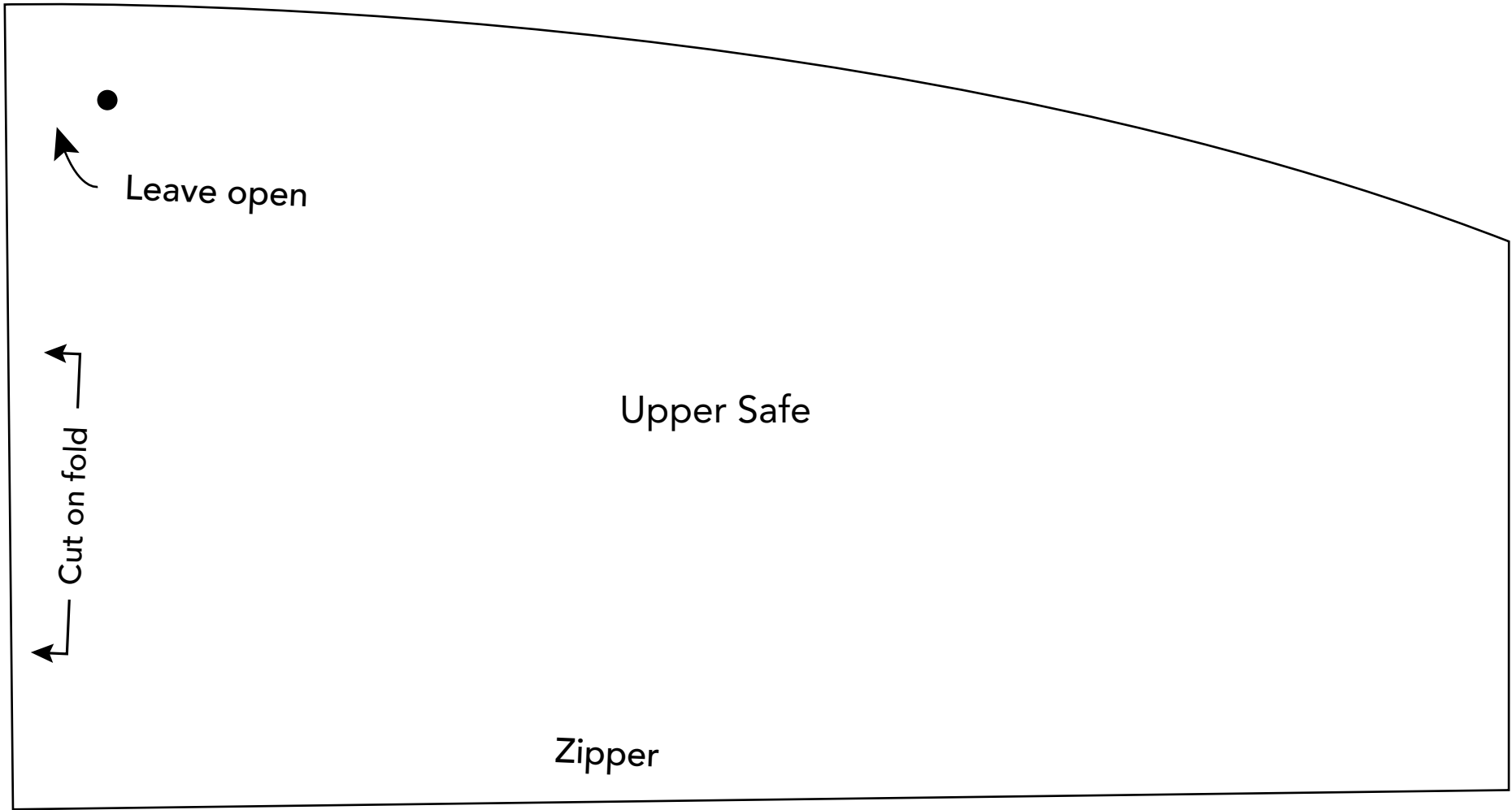
Assemble the Safe

1. With the zipper closed, lay the front right sides together with the remaining fabric section and pin. Cut around the shape to cut the safe back.
2. Open the zipper part way, and match the cut edges of the front and back.
3. Sew around the perimeter of the safe, leaving the upper area between the dots unstitched.
4. Turn the safe right side out through the zipper opening, gently poke out the corners and press the edges. Press under the seam allowances on the hanger opening.

Finishing

1. Insert the hanger hook through the upper opening and adjust so that the seam is along the hanger upper edge.
2. Pin the safe snugly around the hanger.
3. Using a standard zipper foot, stitch as close to the hanger as possible, starting and stopping about 2" (5.08cm) from each end of the hanger.
4. Tie the ribbon around the hanger neck and trim ends at an angle.

You can make individual pockets to hold specific items, like your passport, jewelry, etc. Simply draw vertical lines at the desired location on the lower safe section and stitch, stopping about 1" (2.54cm) from the zipper.



This square should measure 1" x 1" (2.54cm x 2.54cm) when printed.

*** Measure templates before cutting to confirm printing at 100%***