



Technique:	Sewing, Appliqué
Designed By:	Linda Turner Griepentrog
Skill Level:	Intermediate
Crafting Time:	An evening
Finished size:	15½" (39.37cm) x 14½" (36.83cm) x 4" (10.16cm)

Featuring Coats & Clark® Transparent Thread

Carry your beach essentials in this cute soft tote adorned with a brightly colored seahorse. Jewels and trim add ambience everyone will admire.

Supplies

- Coats & Clark® Transparent Thread
- Coats & Clark Dual Duty XP® All-purpose Thread
- ¾ yd (68.58cm) sport-weight fabric, 60" (152.40cm) wide
- ¾ yd (68.58cm) lining fabric
- 5" x 11" (12.70cm x 27.94cm) seahorse body fabric
- 7" x 11" (17.78cm x 27.94cm) seahorse back spine fabric
- 4" x 7" (10.16cm x 17.78cm) seahorse flipper/nose fabric
- ¼ yd (1.14m) medium-weight fusible interfacing, 20" (50.80cm) wide
- ½ yd (45.72cm) narrow green fringed trim
- (1) glue-on wiggle eye, (15mm)
- Glue-on pearlized gemstones, 10mm and 16mm diameter
- Craft glue
- Paper-back fusible web
- Pattern tracing cloth

Pattern Making

Draw a 19" (48.26cm) wide x 20½" (52.07cm) tall rectangle on pattern tracing cloth. Cut out a 2" (5.08cm) square from each lower corner. This is the tote bag body pattern. Using the same size rectangle, draw a second one onto pattern tracing cloth and trim 2½" (6.35cm) from the top. This is the lining pattern.

Cutting

WOF = Width of Fabric

From the sport-weight fabric, cut:

- (2) bag body
- (2) strips, 6½" x 24" (16.51cm x 60.96cm), for handles

From the lining fabric, cut:

- (1) bag body lining
- (1) strip, 1½" x WOF (3.81cm x WOF), for binding

From the respective seahorse fabrics, cut:

- (2) flippers and 1 nose
- (2) back spines

From the fusible interfacing, cut:

- (2) bag body

Seam allowances are ½" (1.27cm) on tote and ¼" (.64cm) on seahorse parts.

Preparation

1. Following the manufacturer's instructions, fuse the bag body interfacing to the wrong side of the bag body pieces.
2. Trace the seahorse body onto the paper side of the fusible web. Rough-cut the shape. Fuse to the wrong side of the seahorse body fabric and cut on the drawn line.

Assemble the Bag Front

1. With right sides together, sew along the outer edge of the back spine. Clip the curves, trim the seam allowances and turn right side out. Press.
2. Stitch from the center edges to the points to add "ribs."
3. With right sides together, sew completely around the flipper. Clip the curves and corners and trim seam allowances. Make a small cut in one layer only and turn right side out through the opening. Stitch from the lower edge to the points to add texture.
4. Position the back spine on the tote front approximately 6" (16.51cm) from the left tote side and 6" (15.24cm) from the lower edge. Peel the backing paper from the seahorse body shape and position overlapping the spine ¼" (.64cm). Fuse in place.
5. Using Transparent Thread and a medium zigzag, sew around the body.
6. Fuse the nose in place on the snout.
7. Make a center pleat in the curved flipper end and hand-stitch to the body, leaving the webbed edges free.
8. Glue the eye in place and the gemstones in a desired pattern. Let dry.
9. Sew the green trim below the seahorse and to make sea grass as desired.

Assemble the Handles

1. Fold each handle in half and press along the length. Unfold and press both long edges to the center crease. Refold in half and edgestitch both long edges.

Assemble the Lining

1. With right sides together, sew the side and lower seams. Press open.

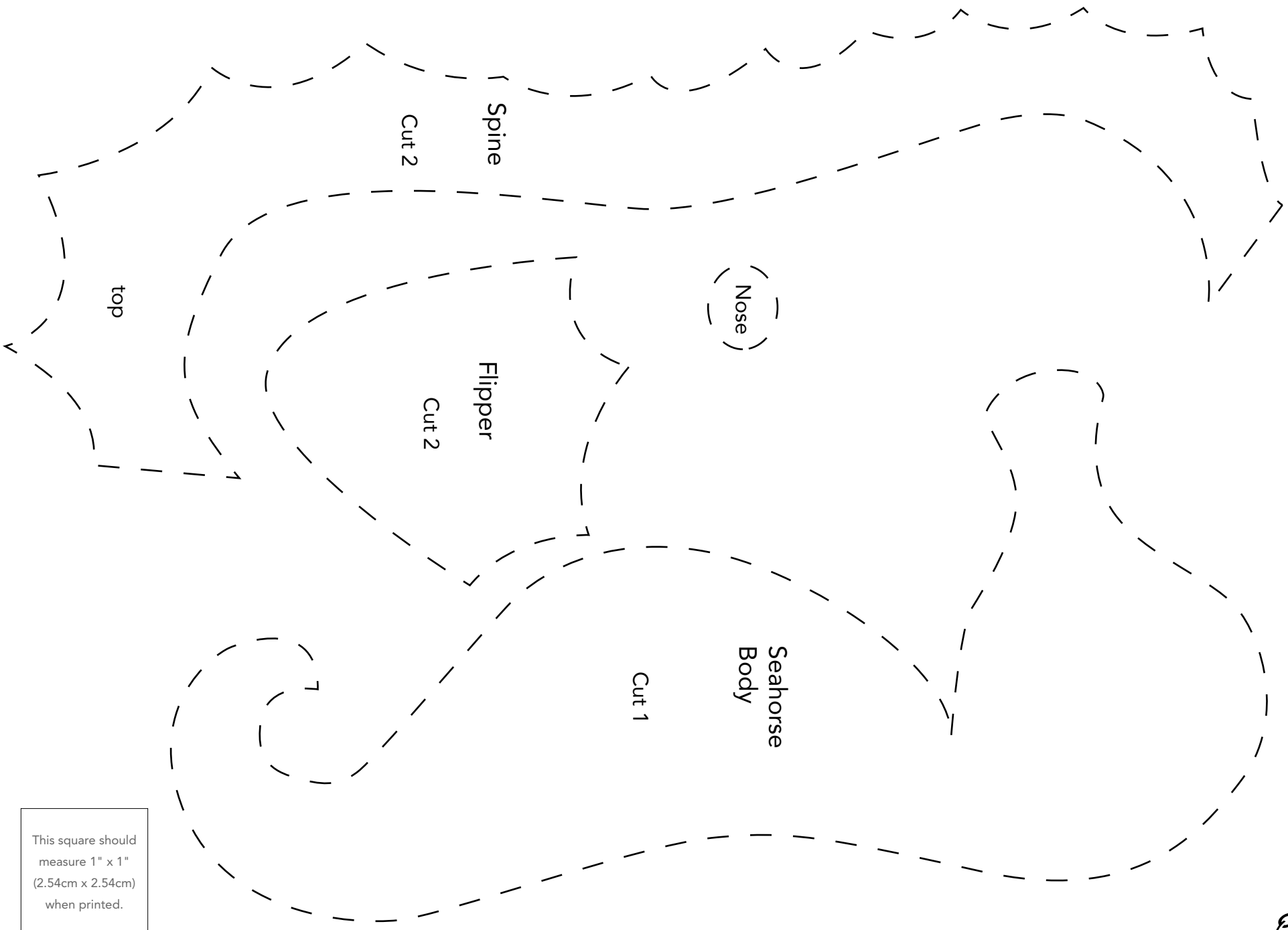
2. To box the bottom corners, fold the side seam on top of the bottom seam and sew across each corner.

Assemble the Bag

1. Place the bag front and back right sides together and sew the side and lower seams. Press the seams open.
2. To box the bottom corners, fold the side seam on top of the bottom seam and sew across each corner. Turn the bag right side out.
3. Mark the bag top center on both the front and back pieces. Measure out 3" (7.62cm) on each side of center and pin the handle ends in place, being careful not to twist and matching the cut edges to the upper bag edge.
4. Stitch each handle end in place over the previous stitching line and across the handle 2" (5.08cm) from the upper edge.
5. Using a single layer of fabric binding and a ¼" (.64cm) seam allowance, sew it around the tote upper edge encasing the handle ends. Press the binding to the wrong side and stitch in the ditch of the seamline.
6. Press under a 2" (5.08cm) hem at the tote bag upper edge.
7. With wrong sides together, slip the lining into the bag and pin in place, matching the lower corners and side seams. Fold the upper bag hem over the lining and hand-stitch in place.

Finishing

1. Topstitch ¼" (.64cm) around the upper bag edge.
2. Press a crease along the lower bag from corner to corner.



This square should measure 1" x 1" (2.54cm x 2.54cm) when printed.

*** Measure templates before cutting to confirm printing at 100%***

